

Brentwood Boulevard Corridor Specific Plan

City of Brentwood, California

THE CORRIDOR SPECIFIC PLAN IS INTENDED TO ATTRACT AND GUIDE GROWTH TOWARDS ACHIEVING THE COMMUNITY'S STATED GOALS FOR VITAL AND ATTRACTIVE NEIGHBORHOODS.

THE CDC'S FORM-BASED CODE AND CUSTOM CHARACTER GUIDELINES WILL GUIDE NEW PRIVATE INVESTMENT, WHILE STREETScape DESIGNS FOR A MULTIWAY BOULEVARD AND OTHER CAPITAL IMPROVEMENTS SET THE STAGE FOR AND SUPPORT DESIRED RESIDENTIAL, WORKPLACE, AND COMMERCIAL DEVELOPMENT.

PLANNING PROCESS

- Planning process oriented towards informing residents about alternative future development patterns and associated trade-offs.

PLAN GOALS

- Organize commercial investment at key locations to create walkable neighborhood centers.
- Attract residential, workplace, and commercial investment throughout the project area.
- Direct capital improvements towards attracting and supporting desired future investment.

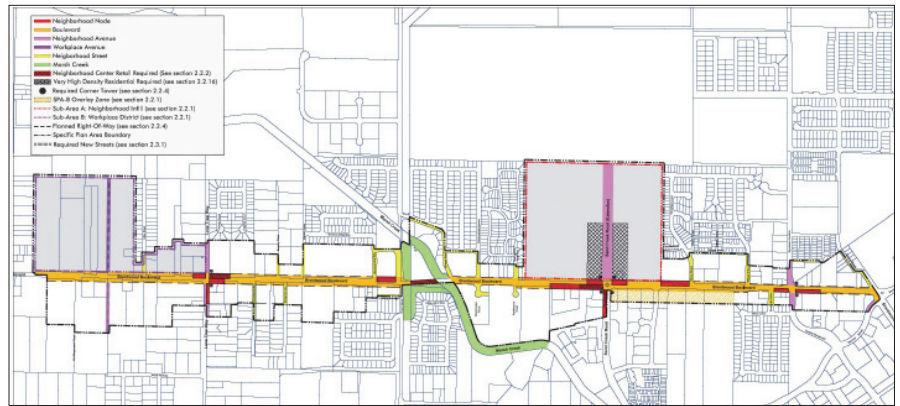
PLAN COMPONENTS

- Community vision and goals.
- Growth strategies
- Opportunity site masterplans.
- Land use strategies
- Form-based development standards for site design, landscape, and open space treatment.
- Architectural standards and guidelines.
- Parking and signage regulations.
- Capital improvement strategies for streetscape designs.
- Implementation strategies.

ECONOMIC REPORT

- Market Analysis
- Action Plan for Economic Stimulus

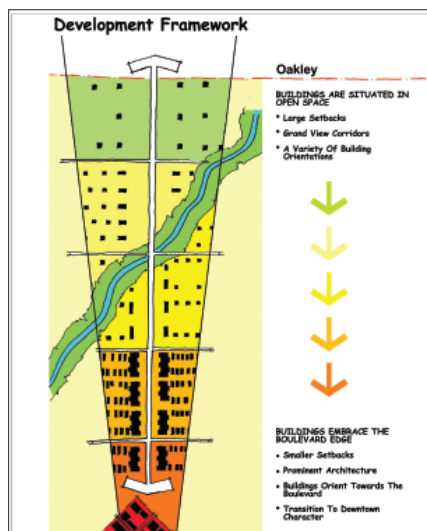
In Association with:
Freedman Tung and Bottomley
Gruen Gruen + Associates



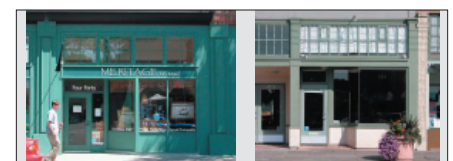
Regulating Plan illustrating Corridor Zones and special plan area conditions.



Envisioned buildout illustrating multiway boulevard streetscape improvements with adjacent residential and workplace development.



Range of preferred development intensities organized by boulevard district



Preferred building character based on community charrette