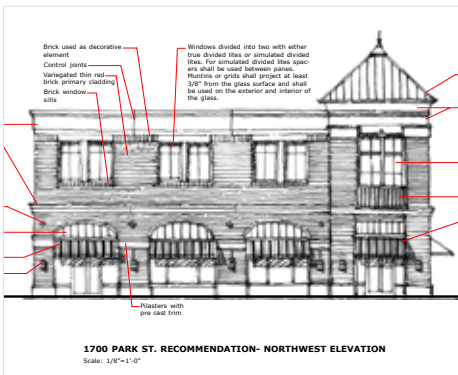
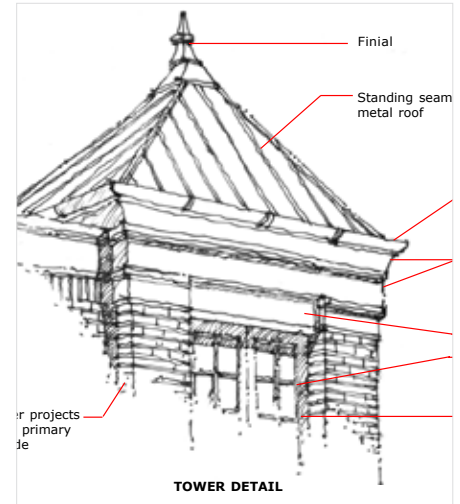


Design Review Manual

Alameda, California



STANDARDS AND GUIDELINES FOR NEW DEVELOPMENT



1700 PARK ST. RECOMMENDATION- NORTHWEST ELEVATION
Scale: 1/8"=1'-0"



The Design Review Manual was created specifically for the City of Alameda to serve as a centralized document for applicants and city staff to ensure that new projects are designed in accordance with the community's vision for architectural style, craft, and character. The document employs form-based site development regulations and style guidelines to serve applicants, design review staff, and decision-makers. The Design Manual will streamline the application process for new projects and reduce investor risk, enhancing the City's ability to attract new residential and commercial investment.

PROJECT FEATURES

- Form-based development regulations for Building Types, Frontage Types, Architecture, Landscape and Open Space, and site specific design requirements.
- Architectural style guidelines for historic and contemporary styles.
- Assists in the preparation, evaluation, and approval of design plans.
- Applicable to new buildings and modifications to existing buildings.

PRIMARY CLIENT

City of Alameda

STATUS

On-going

ROLE

Prime Urban Design Consultant

RESPONSIBILITIES

Architectural Style Guidelines, Design Review, Development Standards, Zoning Code Integration

REFERENCE

Andrew Thomas, Planning Svcs Manager
athomas@ci.alameda.ca.us
(510) 747-6881